



## Message From the Director

As we approach the Thanksgiving holiday, I want to take a moment to express my gratitude to each of you for your dedication to advancing research and improving health outcomes across Louisiana. This season reminds us of the importance of reflection and appreciation—not only for the progress we’ve made, but also for the collaborative spirit that drives our work forward. I encourage you to carry forward the momentum we’ve built, fostering collaboration and innovation that will further enhance our ability to translate research into meaningful improvements in health.

On behalf of the LA CaTS Center Leadership Team, I wish you and your families a joyful holiday filled with gratitude, rest, and renewal. Thank you for all that you do to advance our mission.

Sincerely,



John Kirwan, PhD  
LA CaTS Center IDeA-CTR Director  
Executive Director, Pennington Biomedical Research Center

## LA CaTS 2026 Roadmap Scholar Program

The LA CaTS Professional Development Core is pleased to announce the opening of applications for the LA CaTS 2026 Roadmap Scholars Program. The program provides the opportunity for junior faculty, together with their mentors, to design an individual research Roadmap that includes completion of a Master's of Science in Clinical Research and execution of a concentrated training plan and research project.

Application details can be found [here](#).

[Read our Program Highlight](#)

### Informational Zoom Sessions:

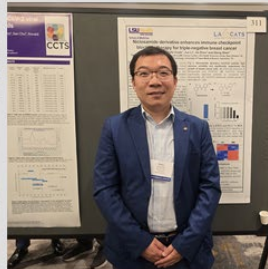
- Friday, December 19, 2025 at 12pm | [Zoom Meeting Link](#)
- Thursday, January 8, 2026 at 12:30pm | [Zoom Meeting Link](#)

**Questions?** Contact [CareerDevel@LACaTS.org](mailto:CareerDevel@LACaTS.org)

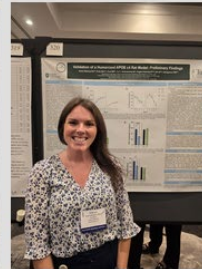
### Cohort 13 Roadmap Scholar



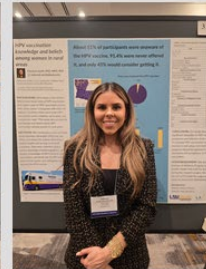
Jennifer Caldwell, PhD  
Pennington Biomedical Research Center



Zhiping Liang, PhD  
LSU Health New Orleans



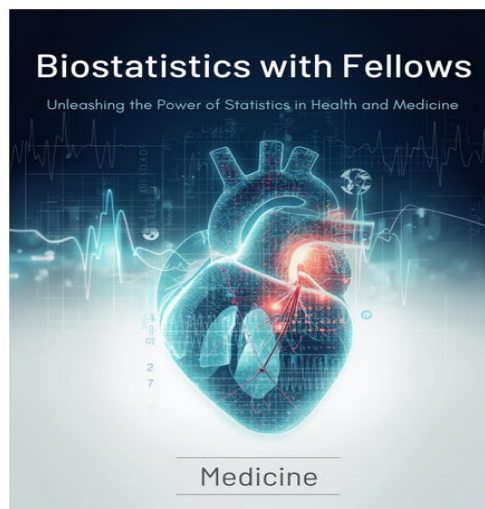
Rebecca Solch-Ottaiano, PhD  
Tulane University



Deborah Smith, PhD  
LSU Health Shreveport



### Core Highlight: Biostatistics, Epidemiology, & Research Design (BERD) Core



Read our highlight [here](#).

# Southern Regional Meetings 2026



## Save the Date!

Join us in New Orleans for the 2026 Southern Regional Meeting hosted by the Southern Society for Clinical Investigation (SSCI) **February 26-28, 2026**. SSCI is a premier regional society supporting the advancement of medical research by sponsoring an annual meeting, recognizing excellence in academic medicine, developing programs specifically to support young medical investigators, and publishing [The American Journal of the Medical Sciences](#).

The LA CaTS Center will co-host a joint symposium on **"NextGen Clinical Research Minds: Shaping the Future of Medicine"**.

Why should I attend?

- SSCI Fellow, Scholars, Early Career and Mentor Award opportunities available
- Meeting includes sessions & workshops on career development, manuscript preparation, clinical cases & scientific advances in various diseases.
- Networking opportunities among physician-scientists
- In-state regional meeting

[Read More & Register NOW!](#)

## Welcome to the Team!



**Amanda Staiano, PhD**  
Pennington Biomedical  
Research Center

**Amanda Staiano, PhD**  
Professional Development Core Co-Leader



# HATS OFF TO OUR RESEARCHERS



**David Welsh, MD**  
LSU Health New Orleans



**Robert Siggins, PhD**  
LSU Health New Orleans

[Received Precision Medicine R01 from NIAAA](#)



**Carly Pigg**  
LSU Health New Orleans



**Amanda Staiano, PhD**  
Pennington Biomedical

[Society for Research Administrators  
International \(SRAI\) Distinguished Faculty](#)

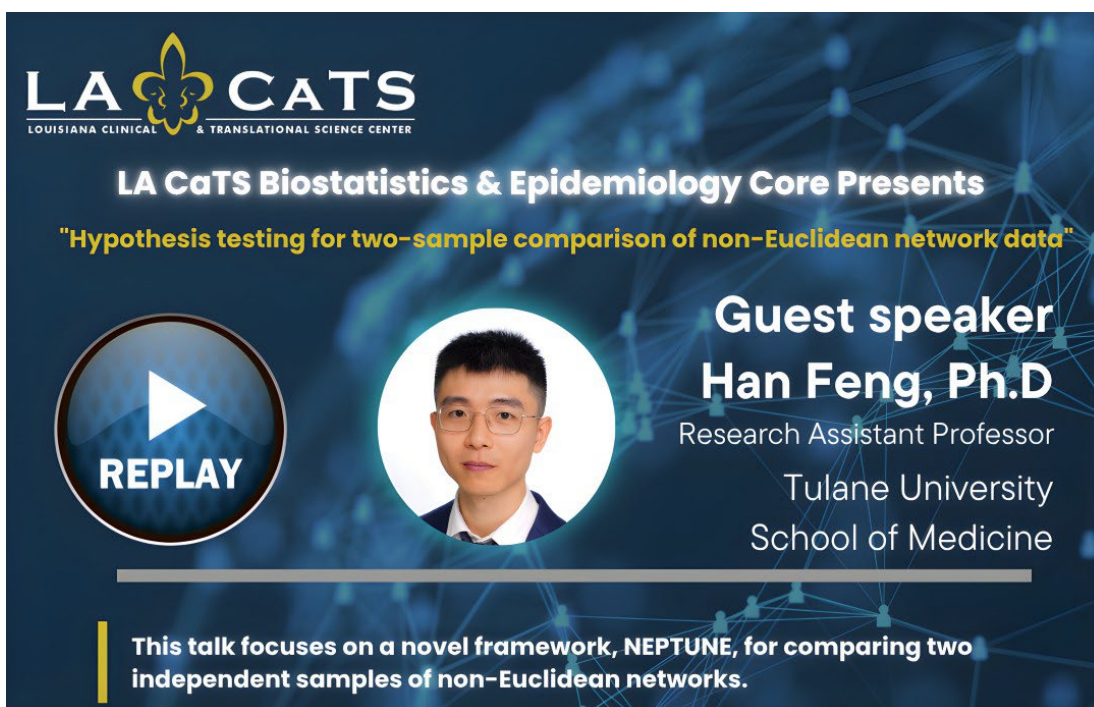
[Received NIH funding renewal for Louisiana's  
ECHO program](#)



**Ursula White, PhD**  
Pennington Biomedical

[Elected as Secretary/Treasurer of The Obesity Society](#)

Catch the *Replay* on our Most Recent Webinar



**LA CaTS**  
LOUISIANA CLINICAL & TRANSLATIONAL SCIENCE CENTER

**LA CaTS Biostatistics & Epidemiology Core Presents**

**"Hypothesis testing for two-sample comparison of non-Euclidean network data"**

**Guest speaker**  
**Han Feng, Ph.D**  
Research Assistant Professor  
Tulane University  
School of Medicine

**REPLAY**

This talk focuses on a novel framework, NEPTUNE, for comparing two independent samples of non-Euclidean networks.

View in our Webinar & Video Library [here](#).

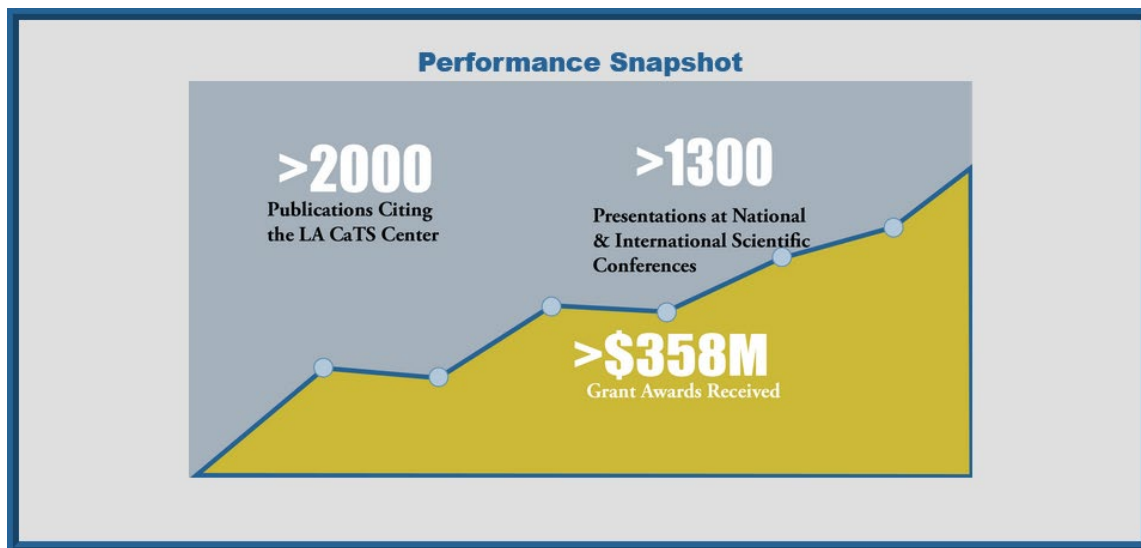
### *Advising Excellence*

LA CaTS Center Convenes Annual External Advisory Committee Site Visit in New Orleans

#### **2025 LA CaTS External Advisory Committee Meeting**



Click [here](#) to read more



## Funding & Training Opportunities



The **Roadmap Scholars Program** targets junior faculty who are just entering the field of clinical and translational research. When they complete this training, we anticipate that the scholars will have competed successfully for an NIH Career Transition (K) award or its equivalent, permitting continued protected mentored career development.

**Applications Due: February 2, 2026**

[More details](#)



The **LA CaTS Community Scholars Program** provides formal training and pilot project funds for teams comprised of a community and an academic partner, interested in conducting community-engaged (CEnR) research studies.

**Applications Due: January 19, 2026**

[More details](#)



The **LA CaTS Grant Development Award Program** supports investigators with sufficient preliminary data to support collaborative grant-writing teams. Awards are up to \$5,000 in total costs.

**Open enrollment until the maximum numbers of awards are met.**

[More details](#)



**LA CaTS Visiting Scholars Program** supports training opportunities for junior investigators to enhance skills or learn new technique. Awards are up to \$5,000 in total costs.

**Open enrollment until the maximum numbers of awards are met.**

[More details](#)



**Short Experiences in Clinical Trials** support junior investigators in clinical or translational research, and to link them with clinical trial mentors to assist their development in the field. Each award may be up to \$5,000 in total costs.

**Open enrollment until the maximum numbers of awards are met.**

[More details](#)



## Calendar of Events



[CCTS ExpeDITions Session: "Maternal and Child Health"](#)

**Nov 18, 2025**

Zoom



[CCTS TIERS: Immediate Access Required: Understanding the New Rules for Publishing Federally Funded Research](#)

**Nov 19, 2025**

Zoom



[18th Annual Conference on the Science of Dissemination and Implementation in Health](#)

**Dec 14-17, 2025**

National Harbor, MD



[CCTS ExpeDITions Session: "Community Engaged Dissemination and Implementation Science"](#)

**Dec 16, 2025**

Zoom



[LA CaTS Roadmap Scholar Application - Informational Webinar 1](#)

**Dec 19, 2025**

Zoom





[LA CaTS Roadmap Scholar Application -  
Informational Webinar 2](#)  
**January 8, 2026**  
Zoom



[CCTS Expeditions Session: "Example K and CDA  
Awardees"](#)  
**Jan 20, 2026**  
Zoom



[CCTS Expeditions Session: "Global Health  
Dissemination and Implementation Science"](#)  
**Feb 17, 2026**  
Zoom



[2026 LA CaTS Annual Retreat](#)  
**Feb 26, 2026**  
New Orleans, LA



[2026 Southern Regional Meeting](#)  
**Feb 26-28, 2026**  
New Orleans, LA



[ACTS 2026 Translational Science \(TS26\)](#)  
**Apr 20-23, 2026**  
Milwaukee, WI



[NISBRE 2026](#)  
**Jun 14-17, 2026**  
Bethesda, MD

[See full calendar details](#)



## LA CaTS in the Community



The Community Engagement & Outreach Core congratulates two Baton Rouge community partners that were awarded 2025 Forge AHEAD Community Microgrants.

- **Metromorphosis** (Louisiana): Resident-led community garden project to increase access to healthy food, reduce neighborhood blight, and build local leadership.
- **Louisiana Organization for Refugees and Immigrants** (Louisiana): Development of a maternal health risk assessment tool co-designed with immigrant and refugee women to improve maternal health outcomes.

*"The Community Microgrant Program is part of the Forge AHEAD Center's broader mission to strengthen partnerships, build community capacity and support innovative approaches to improving health in the Deep South. For more information about the Forge AHEAD Center and its programs, visit <https://www.forgeaheadcenter.com/>"*



### Baton Rouge Announces 2026 Community Advisory Board Leaders



**Chair, Michelle Robins Nelson, NP**  
Our Lady of the Lake Regional Medical Center

Dr. Nelson is a Nurse Practitioner with more than 14 years of diverse experiences. She has served as a LA CaTS Center CAB member since 2016.



**Co-Chair, Helen Robins, RN**  
Woman's Hospital

Helen Robins is a Registered Nurse with 21 years experience in postpartum care. She has served as a LA CaTS Center CAB member since 2016.



**Secretary, Jamie Roques, MPA, MPH, APRN**  
Director of Special Projects, Open Health Care Clinic

Jamie Roques has extensive experience in public, behavioral, and women's health. She has served as a LA CaTS Center CAB member since 2016.

Learn more about the LA CaTS Community Advisory Boards (CABs) and how they can help your research [HERE](#).

---

## Recent Publications

### [Prevalence of Clinical Obesity in US Adults, 2017-2020.](#)

Shen Y, Hu G. Obesity (Silver Spring). 2025 Oct;33(10):1968-1976.

### [Hydrogen Sulfide Deficiency and Therapeutic Targeting in Cardiometabolic HFpEF: Evidence for Synergistic Benefit With GLP-1/ Glucagon Agonism.](#)

Doiron JE, Elbatreek MH, Xia H, Yu X, Gehred ND, Gromova T, Chen J, Driver IH, Muraoka N, Jensen M, Shambhu S, Tang WHW, LaPenna KB, Sharp TE 3rd, Goodchild TT, Xian M, Xu S, Quiriarte H, Allerton TD, Zagouras A, Wilcox J, Shah SJ, Pfeilschifter J, Beck KF, Vondriska TM, Li Z, Lefer DJ. JACC Basic Transl Sci. 2025 Oct;10(10):101297.

### [Association of Hospitalizations With Randomized Glycemia-Lowering Treatment in GRADE.](#)

Hsia DS, Younes N, Ghosh A, Kazemi EJ, Krause-Steinrauf H, Buse JB, Baker C, Brown-Friday J, Diaz E, Diner J, Groessl EJ, Legowski EA, Mariash CN, Waltje AH, Wexler DJ, Martin CL; GRADE Research Group. Diabetes Care. 2025 Jul 1;48(7):1288-1294.

### [Loneliness, social isolation and stroke risk in men and women with and without diabetes.](#)

Wu X, Zu Y, Wang X, Yoshida Y. BMC Public Health. 2025 Sep 25;25(1):3135.

### [Response to Hayashi et al.](#)

Martin CK, Diktas HE, Cardel MI, LeBlanc MM, Dickinson SL, Ables EM, Chen X, Nathan R, Shapiro D, Foster GD. Obesity (Silver Spring). 2025 Sep;33(9):1617-1618.

### [Dynamic phenotypes of preclinical and clinical obesity in relation to new-onset cancer risk: A longitudinal analysis from the UK biobank.](#)

Xu M, Li M, Zhang Y, Li L, Shen Y, Hu G. Diabetes Obes Metab. 2025 Sep;27(9):5291-5301.

### [Trends in prevalence of health and cardiovascular risk factors based on Life's Essential 8 among US adults, 2007-2020.](#)

Zhang L, Shen Y, Tang Y, Wu Y, Chen D, Liang Z, Hu G. Obesity (Silver Spring). 2025 Sep;33(9):1756-1764.

### [Trends and Risk Factors of Oral Health and Preventive Dental Care in Adults With Diabetes and Prediabetes: National Health and Nutrition Examination Survey 1999-2000 to 2017-2020.](#)

Lu Y, Yoshida Y. Endocr Pract. 2025 Jul;31(7):867-874.

### [LIFE-Moms: effects of multicomponent lifestyle randomized control trial on physical activity during pregnancy in women with overweight and obesity.](#)

Cabre HE, Drews KL, Pomeroy J, Keadle SK, Arteaga SS, Franks PW, Haire-Joshu D, Knowler WC, Pi-Sunyer X, Van Horn L, Wing RR, Cahill AG, Clifton RG, Couch KA, Gallagher D, Josefson JL, Joshipura K, Klein S, Martin CK, Peaceman AM, Phelan S, Thom EA, Redman LM; LIFE-Moms Research Group. Int J Behav Nutr Phys Act. 2025 Sep 30;22(1):119.

### [Impact of Preexisting Rare Diseases on COVID-19 Severity, Reinfection, and Long COVID, and the Modifying Effects of Vaccination and Antiviral Therapy: A Retrospective Study from the N3C Data Enclave.](#)

Yadaw AS, Sahner DK, Sid E, Chew EY, Pichard D, Mathé EA. medRxiv [Preprint]. 2025 Jul 10:2025.07.09.25331138.

### [Rhbg interaction with CA-IV and its effects on NH<sub>3</sub>/NH<sub>4</sub><sup>+</sup> and CO<sub>2</sub> transport.](#)

Zhou H, Abdounour-Nakhoul S, Hamm LL, Nakhoul NL. Am J Physiol Cell Physiol. 2025 Sep 1;329(3):C887-C903.

### [A Metabolomics Study of Cardiac Dysfunction in Hyperglycemia: Findings From the Atherosclerosis Risk in Communities \(ARIC\) Study and the Hispanic Community Health Study/Study of Latinos \(HCHS/SOL\).](#)

Yoshida Y, Nguyen NQ, Moon EH, Rebholz C, Skali H, Arthur V, Echouffo-Tcheugui JB, Ballantyne C, Selvin E, Shah A, Kaplan R, Rodriguez CJ, Qi Q, Cheng S, Yu B. Diabetes Care. 2025 Sep 1;48(9):1589-1597.

### [Perceptions of sleep and sleep research among African American adults.](#)

Peyrel P, Viverito M, Eliser D, Tanksley M, Newton RL Jr, Carmichael OT, Baron KG, Singh P. Sleep Health. 2025 Oct;11(5):724-730.

### [Precision Prevention, Diagnostics, and Treatment of Obesity: Pipedream or Reality?](#)

Woolf EK, Diktas HE, Acosta A, Apolzan JW, Ard JD, Boyle KE, Gilbert JA, Katzmazyk PT, Laurienti PJ, Lobstein T, Nicastro HL, Ordovas JM, Phelan S, Redman LM, Roe BE, Ryan DH, Stephens JM, Tate DF, Apovian CM, Martin CK. Obesity (Silver Spring). 2025 Nov;33(11):2029-2045.

[The Associations of SUNRISE Product-Oriented Gross Motor Skills With Process-Oriented TGMD-3.](#)

Spring KE, Staiano AE, Brandon D, Okely AD, Webster EK. J Mot Learn Dev. 2025 Aug;13(2):506-522.

[Effect of Paxlovid treatment during acute COVID-19 on Long COVID onset: An EHR-based target trial emulation from the N3C and RECOVER consortia.](#)

Preiss A, Bhatia A, Aragon LV, Baratta JM, Baskaran M, Blancero F, Brannock MD, Chew RF, Díaz I, Fitzgerald M, Kelly EP, Zhou AG, Carton TW, Chute CG, Haendel M, Moffitt R, Pfaff E; N3C Consortium and the RECOVER Cohort. PLoS Med. 2025 Sep 15;22(9):e1004711.

[Oncogenic effects of ECM remodeling in obesity and breast cancer.](#)

Hawes ML, Moody MA, McCauley CR, Huddleston AG, Solanky M, Khosravi DH, Patel AR, Lynch RM, Alahari SK, Bunnell BA, Belgodere JA, Hoang VT, Burow ME, Martin EC. Oncogene. 2025 Sep;44(37):3409-3421.

[A novel subtyping method for TNBC with implications for prognosis and therapy.](#)

Mesrizadeh Z, Mukund K, Zabaleta J, Del Valle L, Tomsic J, Neuhausen S, Ding YC, Seewaldt V, Ochoa A, Miele L, Subramaniam S. bioRxiv [Preprint]. 2025 Jul 8:2025.07.04.663242.

[Perceived Risk and HPV Vaccination Awareness Among Women in Rural and Underserved Communities in the State of Louisiana.](#)

Smith DG, Dantes EM, Beyl R, de Koter YXA, Bourg M, Smith CD, Jackson G, Brown J, McLarty JW. J Community Health. 2025 Oct;50(5):826-832.

[Mapping Long COVID: Spatial and Social Inequities Across the United States.](#)

Chen Z, Li B, Chen Y, Liu J, Luo F, Ogunyemi KO, Ge Y, Ke Y, Yang Y, Chen X, Shen Y. medRxiv [Preprint]. 2025 Aug 26:2025.08.21.25334183.

[Acute Effect of Intranasal Insulin on Food Intake Among Middle-Aged African American Adults: The FIINAAL Study.](#)

Goodson MM, Gwizdala KL, Manrique IR, Rao A, Beyl R, Martin CK, Firmin S, Salceanu V, Newton RL Jr, Carmichael OT. J Endocr Soc. 2025 Aug 25;9(10):bvaf138.

[Correspondence regarding "excess adiposity and cancer: evaluating a preclinical-clinical obesity framework for risk stratification".](#)

Hu G, Shen Y. EClinicalMedicine. 2025 Aug 30;88:103472.

[Blood metabolome of cardiovascular disease, diabetic kidney disease, and diabetic retinopathy in type 2 diabetes patients: A systematic review and meta-analysis.](#)

Kuo S, Li D, Wargny M, Yoshida T, Yoshida Y. Endocr Res. 2025 Nov;50(4):244-270.

[Life's essential 8 and risk of progression to diabetes among young adults with prediabetes.](#)

Lovre D, Zu Y, Cheung HY, Yoshida Y. Sci Rep. 2025 Oct 13;15(1):35690.

[Validity of the PortionSize and MyFitnessPal Smartphone Applications for Estimating Dietary Intake: A Randomized Crossover Clinical Trial.](#)

Diktas HE, Lozano CP, Saha S, Broyles ST, Martin CK, Apolzan JW. J Nutr. 2025 Sep 27:S0022-3166(25)00572-3.

[Higher mortality following SARS-CoV-2 infection in rural versus urban dwellers persists for two years post-infection.](#)

Anzalone AJ, Vest MT, Schissel ME, Price B, Hillegass WB, Horswell R, Chu S, Rosen CJ, Miele L, Santangelo SL, Smith GS, Hodder SL; National Clinical Cohort Collaborative (N3C) Consortium. Nat Commun. 2025 Oct 8;16(1):8933.

[Change of Spiny Neuron Structure in the Basal Ganglia Song Circuit and Its Regulation by miR-9 during Song Development.](#)

Jarrell H, Akhtar A, Horowitz M, Huang Z, Shi Z, Fang Z, Li X. J Neurosci. 2025 Jul 16;45(29):e2276232025.

[A familial natural short sleep mutation in \*dec2\* extends healthspan and lifespan in \*Drosophila\*.](#)

Pandey P, Wall PK, Lopez SR, Zunica ERM, Dubuisson OS, Dantas WS, Davuluri G, Taylor AL, Wall TK, Juge HJ, Kirwan JP, Axelrod CL, Johnson AE. iScience. 2025 Aug 21;28(9):113388.

[An eHealth Intervention in Pregnancy on Maternal Body Composition and Subsequent Perinatal Outcomes: A Randomized Trial.](#)

Kebbe M, Falkenhain K, Beyl R, Altazan AD, Flanagan EW, Kracht CL, Cabre HE, Woolf EK, Hsia DS, Apolzan JW, Redman LM. Obesity (Silver Spring). 2025 Sep;33(9):1680-1693.

[Lack of Association of Emotional Distress With Insulin Initiation in the GRADE Randomized Diabetes Comparative Effectiveness Trial.](#) Presley CA, Butera NM, Krause-Steinrauf H, Desouza CV, Hollander PA, Hoogendoorn CJ, Lagari VS, Legowski EA, Martin CL, Rasouli N, Gonzalez JS, Cherrington AL. Sci Diabetes Self Manag Care. 2025 Aug;51(4):382-393.

[Association between physical activity energy expenditure and markers of healthspan during prolonged calorie restriction in individuals without obesity: observations from the CALERIE™ phase 2 randomized controlled trial.](#)

Dorling JL, Martin CK, Das SK, Racette SB, Redman LM, Huffman KM, Höchsmann C, Kraus WE. Int J Behav Nutr Phys Act. 2025 Oct 7;22(1):124.

[Factors Affecting Reproducibility of Change in Glucose During Exercise: Results From the Type 1 Diabetes and EXercise Initiative.](#)

Li Z, Calhoun P, Rickels MR, Gal RL, Beck RW, Jacobs PG, Clements MA, Patton SR, Castle JR, Martin CK, Gillingham MB, Doyle FJ 3rd, Riddell MC. J Diabetes Sci Technol. 2025 Jul;19(4):958-970.

[Revealing associations between exposure to cyanobacteria toxins and COVID-19 outcomes in Colorado.](#) Thessen

AE, O'Neil ST, Haendel MA. medRxiv [Preprint]. 2025 Aug 5:2025.08.01.25332749.

[NEK Family Kinases: Structure, Function, and Role in Disease.](#)

Baker BM, Boehling JR, Knopf S, Held S, Matossian M, Belgodere JA, Hoang VT, Collins-Burow BM, Martin EC, Lee SB, Burow ME, Drewry DH, Newman RH. Biomolecules. 2025 Oct 2;15(10):1406.

[Re-engineering a machine learning phenotype to adapt to the changing COVID-19 landscape: a machine learning modelling study from the N3C and RECOVER consortia.](#)

Crosskey M, McIntee T, Preiss S, Brannock D, Baratta JM, Yoo YJ, Hadley E, Blanceró F, Chew R, Loomba J, Bhatia A, Chute CG, Haendel M, Moffitt R, Pfaff ER; N3C Consortium and the RECOVER EHR cohort. Lancet Digit Health. 2025 Aug;7(8):100887.

[Zero Dollar Copay Pharmacy Benefit Decreases Healthcare Expenditures Among Members With Type 2 Diabetes of Blue Cross Blue Shield of Louisiana.](#)

Tang T, Stoecker C, Winberg D, Liu M, Nauman E, Cong M, Price-Haywood E, Mohundro BL, Bazzano AN, Shi L; Louisiana Experiment Assessing Diabetes Outcomes (LEAD)-ZDC Working Group. Value Health. 2025 Jul 28:S1098-3015(25)02484-2.



**Our mailing address is:**

LA CaTS Center

6400 Perkins Road, Baton Rouge, LA 70808