

CHRONIC DISEASE PREVENTION • HEALTH DISPARITIES • IMPROVING HEALTH OUTCOMES IN THE UNDERSERVED POPULATION

2023 Executive Summary



Baton Rouge

- › Pennington Biomedical Research Center
- › LSU A&M



New Orleans

- › LSU Health New Orleans
- › Tulane University
- › Xavier University
- › Children's Hospital
- › LSUH-NO School of Dentistry
- › Ochsner Health System
- › University Medical Center (UMC)
- › Southeast LA Veterans Health Care System



Shreveport

- › LSUH Shreveport



LOUISIANA

Executive Summary

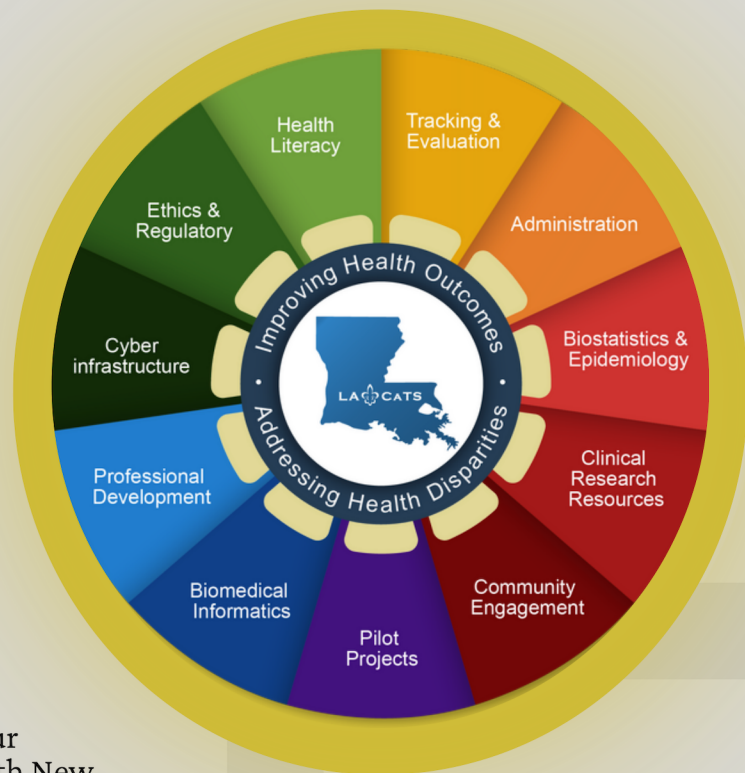
The Louisiana Clinical and Translational Science (LA CaTS) Center combines 10 major Louisiana academic, research and healthcare delivery institutions into a unified research infrastructure, collectively *addressing health disparities and improving health outcomes in our underrepresented and underserved communities with chronic diseases*. We are proud to release the first ever LA CaTS Center Executive Summary to our investigators and stakeholders. This report contains an overview of the LA CaTS Center organization, goals, and accomplishments through 2023. The Center has and will continue to bring important health resources to our researchers and to communities across the state.

The core of the LA CaTS Center comprises three primary collaborating institutions - **Pennington Biomedical Research Center (Lead), LSU Health New Orleans, and Tulane Health Sciences Center** - and is complemented by strong research partners that include LSU Health Shreveport, Xavier University of Louisiana, Ochsner Health System, Children's Hospital of New Orleans, Southeast LA Veterans Health Care System, University Medical Center, LSU Health School of Dentistry, and Louisiana State University A&M campus.



This past year LA CaTS responded to the changing research and health needs of our state by **shifting focus** from COVID-19 back to the chronic diseases that disproportionately affect Louisianians. As LA CaTS continues to grow, we are placing even greater emphasis on our outreach to rural and underserved communities and leveraging the expertise of our Community Advisory Boards. We continued to record major achievements on the grants front and in 2023 we supported **\$44 million** in new grant awards to the state. This was coupled with the generation of new knowledge as evidenced in our **213 publications**.

On a national level, our cores continue to lead data contributions to **COVID-19** initiatives including N3C. Our Clinical Trial Units at Pennington, Tulane, and LSU Health New Orleans provided the most **enrollment of minorities** in clinical trials and featured strongly in engagement in the All-of-U-s and COVID-19 RECOVER studies. This past year, our internal grants programs included multi-institutional projects and reflect increased inclusion of **diversity among the researchers** we support. Our **Community Advisory Boards** have been fully engaged and enabled us to enhance community and investigator involvement. Our research experts continue to mentor the next generation of researchers through initiatives that include a MS bioinformatics degree program, **multi-level trainings** to research coordinators and investigators, and our Roadmap Scholars program that, to date, has provided support, mentoring, and career development to **37** clinical and translational researchers here in Louisiana.



LA CaTS Center Cores & Resources

Executive Summary

The **LA CaTS Center** has been successful in aligning priorities and committing resources of the major biomedical institutions of the state by growing a **single clinical and translational science (CT) program for Louisiana**. We provide a unified, coordinated system to approach and conduct clinical trials that addresses issues on a statewide level.

Major accomplishments since 2012:

1. Securing more than **\$280 million in extramural grant awards for Louisiana** – approximately \$200 million in NIH awards
2. Contributing more than **1,900 publications and 900 competitive scientific presentations**
3. Expansion & engagement of **new partners & resources**. Example: expansion of BMI Core collaboration access to clinical data from across the state and creation of virtual cohorts (e.g., breast cancer, diabetes, HIV, COVID-19), now being used in LA CaTS Center pilot projects, Roadmap Scholars projects and multiple NIH grant applications
4. Recruiting **diverse study population** (~40% ethnic minority) for the statewide network of Clinical Trial Units (CTUs)
5. Highly Engaged **Community Advisory Boards (CAB)** – headquartered in the New Orleans, Baton Rouge and Shreveport/North Louisiana regions. Members participate on research teams to develop and implement studies and serve as advisers to investigators on a broad range of study ideas and ongoing research.
6. Giving more than **850 CT scientists** access to technical services and resources provided by the LA CaTS Center Cores.
7. **30 career promotions** for past and current Roadmap and Meritorious Scholars
8. **18 career promotions** reported for Young Investigators affiliated with the Pilot Grants Program
9. Provided over **215 CT Training and Professional Development opportunities** for researchers and community members through LA CaTS Center seminars, workshops, and virtual platforms.
10. Total of **10 NIH supplement grants awarded**, totaling >\$8.4 million

Additional Funding Success: Subawards & Administrative Supplements

1. “Effects of E-Cigarettes on the Lung Metabolome in People Living with HIV” - Project Leads: David Welsh, MD (LSU Health New Orleans) & John Apolzan, PhD (Pennington Biomedical Research Center)
2. “Pregnancy Complications and Cardiometabolic Health in American Indian Women” - Project Lead: Emily Harville, PhD (Tulane University)
3. RADx-UP: “Transforming Community Engagement to Increase SARS-CoV-2 Testing in Underserved Populations in Baton Rouge” -Project Lead: Peter Katzmarzyk, PhD (Pennington Biomedical)
4. RADx-UP: “Engaging Church Health Ministries to Decrease SARS-CoV-2 Vaccine Hesitancy in Underserved Populations in Baton Rouge” -Project Lead: Peter Katzmarzyk, PhD (Pennington Biomedical)
5. National COVID Cohort Collaborative (N3C): “Improving Health through Partnerships and Transformative Research”- Project Lead: Lucio Miele, MD, PhD (LSU Health New Orleans)
6. “Health Disparities and SARS-CoV-2 Evolution: A Focused Viral Genomics Study” - Project Leads: Lucio Miele, MD, PhD (LSU Health New Orleans) & Daniel Sarpong, PhD (Xavier University)
7. NIH RECOVER: “A Multi-Site Observational Study of Post-Acute Sequelae of SARS-CoV-2 Infection in Adults” - Project Leads: Judd Shellito, MD (LSU Health New Orleans), Vivian Fonseca, MD (Tulane University), & Frank Greenway, MD (Pennington Biomedical)
8. “SARS-CoV-2 Genomics Surveillance Network” - Project Lead: Lucio Miele, MD, PhD (LSU Health New Orleans)
9. “Metabolic Inflammation, Viral Persistence and Bioenergetic T-Cell Fatigue in Post Acute SARS-CoV2”-Project Lead: John Kirwan, PhD (Pennington Biomedical)
10. NIH Administrative Supplement to “Advance the Use of Electronic Health Records for Research” - Project Leads: Ronald Horswell, PhD (Pennington Biomedical), Liheng Shi, PhD, & Vivian Fonseca, MD (Tulane University)

We would like to acknowledge the LA CaTS Center Governing, Advisory, and Operations Committees that have contributed to our success in 2023.

Executive Council

- John Kirwan, PhD, LA CaTS Director
- L. Lee Hamm, MD, LA CaTS Program Co-Director
- Steve Nelson, MD, LA CaTS Program Co-Director

Internal Advisory Committee

- Donna Ryan, MD, Chair, Pennington Biomedical
- Patrice Delafontaine, MD, Tulane University
- Jyotsna Fuloria, MD, University Medical Center
- David Guzick, MD, PhD, LSU Health Shreveport
- Kathleen Kennedy, PharmD, Xavier University
- Gus Kousoulas, PhD, LSU A&M
- Eric Ravussin, PhD, Pennington Biomedical
- Mark Roberts, MD, Ochsner Health System
- Brooks Robey, MD, VA Southeast LA Healthcare
- Royce Sampson, MSN, Medical Univ. of South Carolina
- Janet Southerland, PhD, LSU Health New Orleans

External Advisory Committee

- Craig McClain, MD, Chair, University of Louisville
- Jamy Ard, MD, Wake Forest University
- Claudia Baquet, MD, Hope Institute, LLC
- John Buse, MD, PhD, University of North Carolina
- James Cimino, MD, University of Alabama
- Anna Mae Diehl, MD, Duke University
- Marian Limacher, MD, University of Florida

Core Operations Committee

Administrative

- Executive Council
- Andrew Barton (TU)
- Meaghan Donewar (TU)
- Elizabeth Floyd, PhD (PB)
- Bonnie Hymel (PB)
- Kieu Pham (PB)
- Carly Pigg (LSUHNO)
- Tiffany Prather, RN (PB)

Community Engagement & Outreach

- Stephanie Broyles, PhD (PB)
- Jennifer Caldwell, PhD (PB)
- Margarita Echeverri, PhD (XU)
- D'Andra Odom (PB)
- LaKeisha Williams, PharmD (XU)

Cyberinfrastructure

- David Alexander (PB)
- Ying Wu (PB)
- Aimee Stewart (PB)

Biomedical Informatics

- San Chu (PB)
- David Crosslin, PhD (TU)
- Daniel Fort, PhD (OCH)
- Lucio Miele, MD, PhD (LSUHNO)
- Chindo Hicks, PhD (LSUHNO)
- Ron Horswell, PhD (PB)

Clinical Research Resources

- Paul Fidel, PhD (LSU Dental)
- Vivian Fonseca, MD (TU)
- Virginia Garrison, RN (LSUHNO)
- Frank Greenway, MD (PB)
- Charles Hemenway, MD, PhD (CH)
- Roberta McDuffie, MSN (TU)
- Cynthia Moreau (TU)
- Judd Shellito, MD (LSUH-NO)
- John Vanchiere, MD, PhD (LSUHS)
- David Welsh, MD (LSUHNO)

Health Literacy

- Connie Arnold, PhD (LSUHS)
- Fermine Thomas-Dean (LSUHS)

Biostatistics & Epidemiology

- Robbie Beyl, PhD (PB)
- Kimberly Drews, PhD (PB)
- Zhide Fang, PhD (LSUHNO)
- John Lefante, PhD (TU)
- Donald Mercante, PhD (LSUHNO)
- Arti Shankar, PhD (TU)
- Sudesh Srivastav, PhD (TU)

Ethics & Regulatory

- Richard Culbertson, PhD (LSUHNO)
- Leigh Lamonica, JD (PB)

Professional Development

- Megan Bronson (TU)
- Vivian Fonseca, MD (TU)
- Daniel Kapusta, PhD (LSUHNO)
- Leanne Redman, PhD (PB)
- Michelle Wilson (TU)

Tracking & Evaluation

- Sylvia Goldman, PhD (PB)
- Brian Melancon (PB)

PB - Pennington Biomedical ♦ LSUHNO - LSU Health New Orleans ♦ TU - Tulane Univ ♦ LSUHS - LSU Health Shreveport ♦ OCH - Ochsner ♦ XU - Xavier University ♦ CH - Children's Hospital

The LA CaTS Center is supported in part by **U54 GM104940** from the National Institute of General Medical Sciences of the National Institutes of Health